

**Configuration**

- Dome nut : CuZn, nickel-plated
- Lamellar insert: Polyamide PA6 V-2
- Sealing ring: Polychloroprene-Nitrile rubber NBR
- Gland body: Brass CuZn39Pb3, nickel-plated
- O-ring: Nitrile rubber NBR
- Connecting thread: metric as per EN 60423

**RoHS**

**Properties**

For cables with shielding, integrated anchorage, protection against twisting, wide sealing and clamping range.

Temperature range: -20°C ~ +100°C

Protection grade: IP68 - 5 bar

Comment: details about test standards see annex.

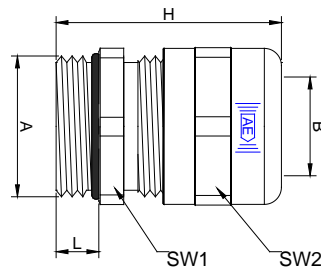
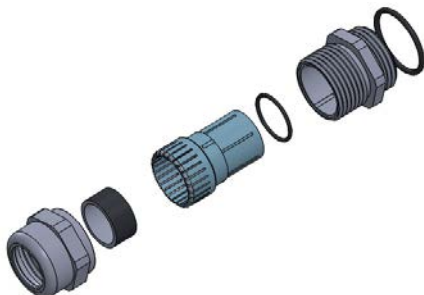


**3**

**Characteristics**

Connecting thread standard length

A	B	L	SW1	SW2	H		Part No.
M12x1.5	3~6	5	14	14	25	100	M612
M12x1.5	5~9	5	17	17	30	100	M1216
3/8"PF	5~9	5	18	17	25	100	83M16
M16x1.5	5~9	5	17	17	30	100	M616
3/8"PF	7~13	6	22	22	33.5	100	83M20
M20x1.5	5~9	5	22	17	30	100	M620-9
M20x1.5	6~10	6	22	22	33.5	100	M620-10
M20x1.5	9~13	6	22	22	33.5	100	M620-13
M25x1.5	11~16	7	27	27	36.5	50	M625
M32x1.5	14~21	8	34	34	38	20	M632
M40x1.5	19~27	8	43	43	41	5	M640
M50x1.5	24~35	9	55	55	49.5	5	M650
M63x1.5	32~48	10	65	65	52.5	5	M663



2013.10.22-CG5

**Configuration**

Sealing ring: Polychloroprene-Nitrile rubber NBR



**Properties**

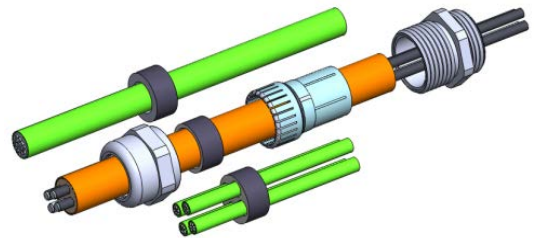
4

sealing insert for installation of several single cables

Temperature range: -20°C ~ +100°C

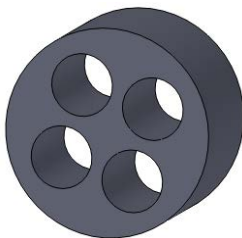
Protection grade: IP68 - 5 bar

Comment: assembled in EMC cable gland

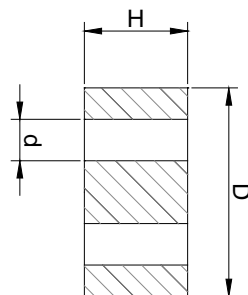


**Characteristics**

sealing insert						Blanking plug-Ø		
size	n x d	H	D		Part No.	OD		Part No.
M12	4x2	6.6	8.5	50	M12/4*2	2	20	D020
M16	4x3.5	7.6	11.7	50	M16/4*3.5	3.5	20	D035
M16	2x4.5	7.6	11.7	50	M16/2*4.5	4.5	20	D045
M20	4x5	7.5	15.1	50	M20/4*5	5.5	20	D050
M20	2x6	7.5	15.1	50	M20/2*6	6.5	20	D060
M25	6x4	9.3	19.8	20	M25/6*4	7.5	20	D040
M25	5x4	9.3	19.8	20	M25/5*4	8.5	20	
M32	6x6	12.5	25.1	20	M32/6*6	10.5	20	D060
M32	6x4	12.5	25.1	20	M32/6*4	11.5	20	D040
M32	4x7	12.5	25.1	20	M32/4*7	12.5	20	D070



sealing insert



Blanking plug